



Hereford Place, Cheltenham GL50 4BD

Offers Over £220,000

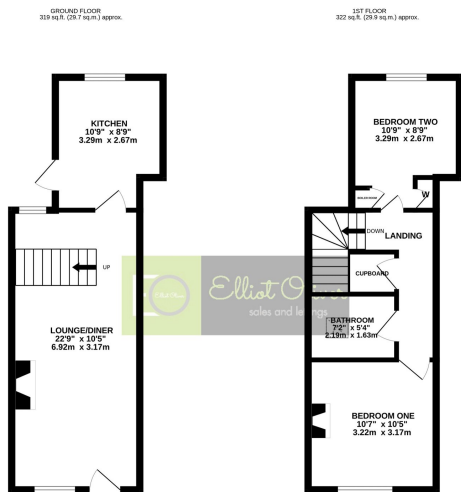
🛏️ 2 🚿 1 🚗 1



- Two double bedrooms
- Mid terraced property
- Open plan lounge/diner
- Modern kitchen
- Fitted wardrobes
- Family bathroom
- Low maintenance garden
- No onward chain
- Permit parking
- Council Tax Band: B



This is a lovely two bedroom terraced property just a stones throw away from the Cheltenham High Street. This comes with no chain and would be a fantastic starter home. It boasts an open plan lounge diner, modern kitchen, two double bedrooms, bathroom and low maintenance garden.



TOTAL FLOOR AREA: 641 sq ft, (59.6 sq m) approx.
 Whilst every effort has been made to ensure the accuracy of the figures contained here, measurements of actual rooms, taken at the time of the above information, may vary slightly from those given. The information contained here is for general information only and should not be relied upon for any specific purpose. The information contained here is for general information only and should not be relied upon for any specific purpose. The information contained here is for general information only and should not be relied upon for any specific purpose.

| Energy Efficiency Rating | | |
|---|-------------------------|-----------|
| | Current | Potential |
| Very energy efficient - lower running costs | | |
| (92 plus) A | | |
| (81-91) B | | 84 |
| (69-80) C | | |
| (55-68) D | 64 | |
| (39-54) E | | |
| (21-38) F | | |
| (1-20) G | | |
| Not energy efficient - higher running costs | | |
| England & Wales | EU Directive 2002/91/EC | |



Elliot Oliver Sales
 101 Promenade, Cheltenham GL50 1NW
 01242 321091
 www.elliottoliver.co.uk

